



Murchison Road | | Leyton | E10 6LT

£1,650 Per Month



STRETTONS



## Key features

- Ground Floor Flat
- Two Bedrooms (Double & Single)
- Offered Unfurnished
- Gas Central Heating & Fully Double Glazed
- Three Piece Bathroom Suite
- Modern Fitted Kitchen with NO APPLIANCES SUPPLIED
- Private Rear Garden
- Within 0.6 Miles to Leytonstone Underground Station (Central Line)
- Available from 19th December 2025
- EPC Rating: C (69)

## Description

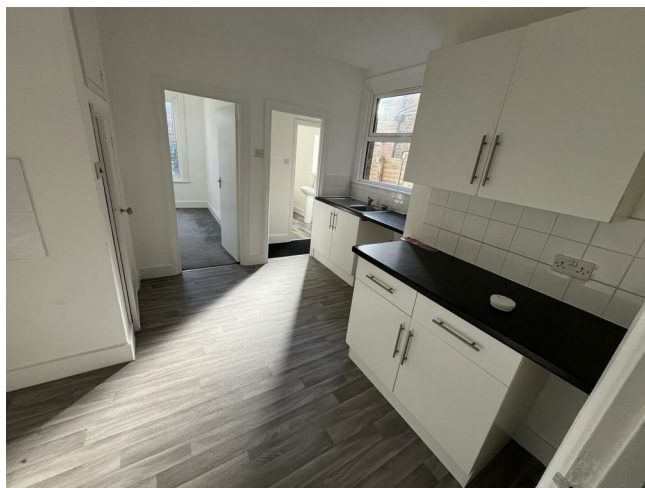
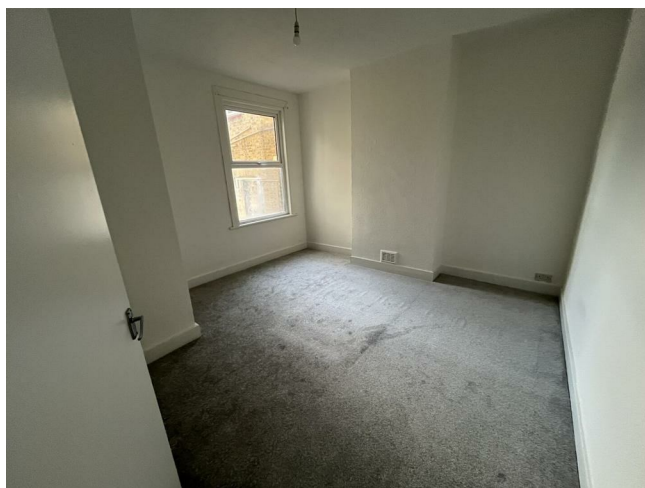
This well-proportioned ground floor flat is situated on the sought-after Murchison Road in Leyton and offers practical, comfortable living space ideal for a professional couple or small family.

The accommodation comprises two bedrooms, including a generously sized double bedroom and a well-proportioned single bedroom that would also work well as a home office or nursery. The property features a modern three-piece bathroom suite and a contemporary fitted kitchen with ample storage and worktop space. Please note that no appliances are supplied. The flat further benefits from gas central heating, full double glazing throughout, and a private rear garden, providing valuable outdoor space rarely found with flats in the area.

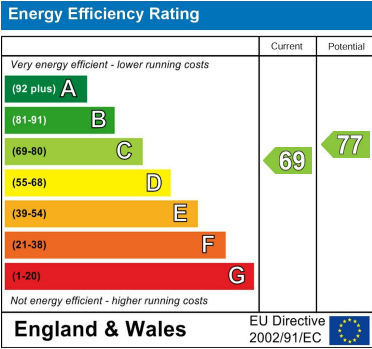
Offered unfurnished, the property allows incoming tenants the flexibility to furnish to their own taste. Its location is particularly convenient, being within approximately 0.6 miles of Leytonstone Underground Station on the Central Line, offering direct links into Stratford, the City, and the West End. The surrounding area provides a range of local shops, amenities, parks, and bus routes, making this a highly practical and well-connected place to live.

The property is available from 19th December 2025 and has an EPC rating of C (69). Early viewing is strongly recommended to appreciate the space, location, and garden offering.

## Directions







Council Tax Band **B**     EPC Rating **C**



69 Paul Street  
London  
London  
EC2A 4NG  
02085 094406

michael.mercer@strettons.co.uk